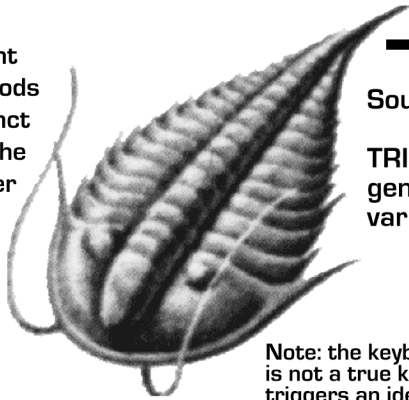


the TRILOBYTE by BENDERELLA

www.myspace.com/benderella

Trilobites were abundant marine arthropods that went extinct at the end of the Paleozoic, over 250 million years ago



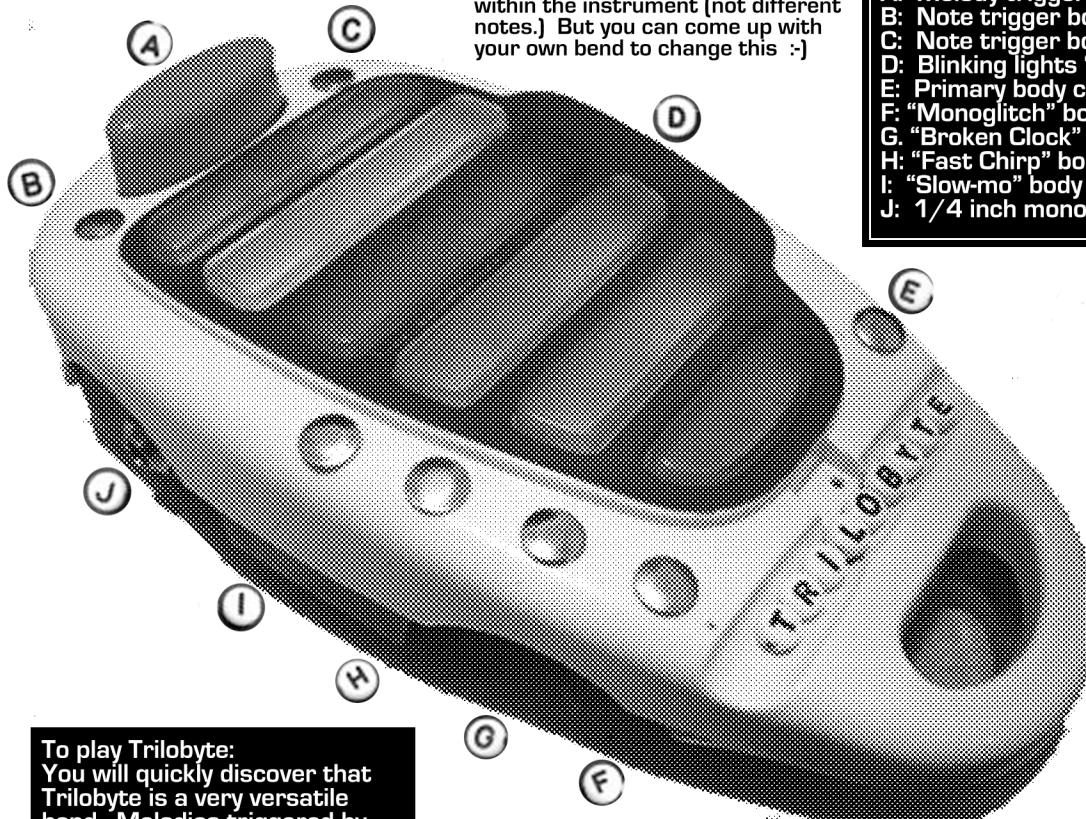
Source product: "Junior Xylophone" by NAVYSTAR (Ngai Shing)

TRILOBYTE is a manic, quasi-aleatronic tone and sequence generator, with seven body contacts providing a near infinite variety of electronic twitterings. Very simple, yet very diverse.

Note: the keyboard on this toy (D) is not a true keyboard. Each key triggers an identical response within the instrument (not different notes.) But you can come up with your own bend to change this :-)

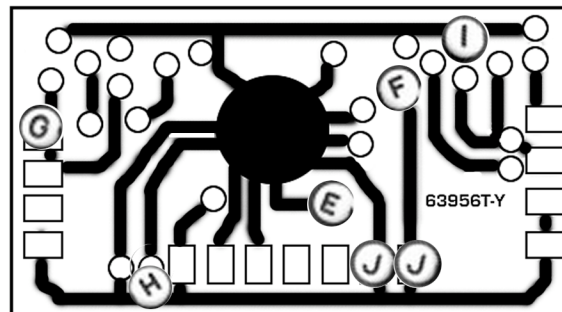
Materials: solder, iron, stranded wire, steel headed thumbtacks, masking tape, wire cutters/strippers, 1/4" mono jack

- A: Melody trigger (factory)
- B: Note trigger body contact B
- C: Note trigger body contact C
- D: Blinking lights "Keyboard" (factory)
- E: Primary body contact E
- F: "Monogitch" body contact F
- G: "Broken Clock" body contact G
- H: "Fast Chirp" body contact H
- I: "Slow-mo" body contact I
- J: 1/4 inch mono jack



To build Trilobyte: Remove and discard wheels and axles. Removal of wheels and axle near melody trigger button (A) will release 2 small plastic gears. Discard. Drill small holes and insert steel-headed thumbtacks where shown. Tape the thumbtacks down firmly. Solder wires cut to length between each thumbtack and the corresponding point indicated on the circuit to the left. A large solder blob flush against the inner housing will hold tacks in place. Note-trigger contact (B) is soldered via wire to the UPPER copper frame inside. Note-trigger contact (C) is soldered via wire to the LOWER copper frame. Drill for 1/4" mono jack through axle hole, and install. Solder jack wires to points indicated as J and J.

To play Trilobyte: You will quickly discover that Trilobyte is a very versatile bend. Melodies triggered by (A) can be modulated to unrecognizable streams of variable sound. Body contacts F, G, H, and I require simultaneous contact with primary contact E. Each contact, when paired with E, results in a different effect: monogitch, broken-clock, fast chirp, and slow-mo. Touching one note-trigger contact (B or C) and tapping the other will generate notes at your chosen rhythm. Contacts work best when fingers are slightly moist. If you think you can handle it, try touching both note-trigger contact B and body contact F, and see what happens :-)



This schematic © 2007 by Benderella and M.C.J.
Reprint by permission.